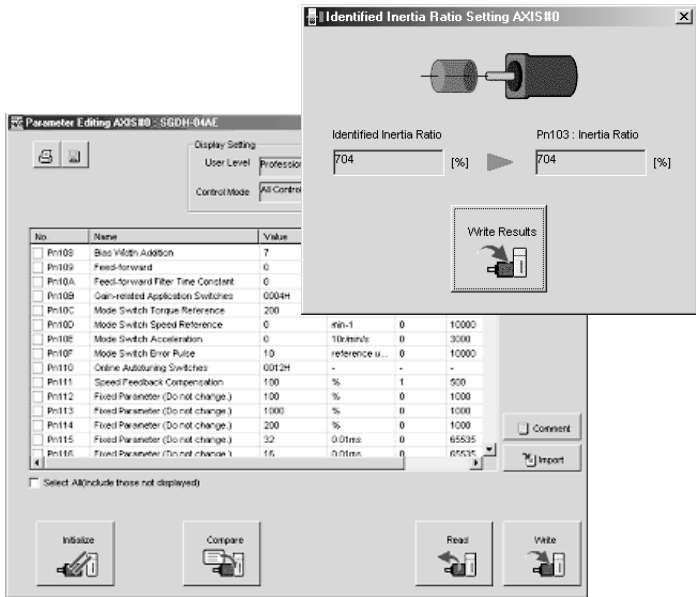


Setup Software for Servo Systems

SigmaWin+

Programming tool for configuring and parameter setting of the Sigma and SmartStep Servo Systems

- The WINDOWS interface makes for simple handling and convenient working.
- Description of all the parameters with setting ranges and factory settings
- Fast Comisioning
- Parameters Setting
- Variables Monitoring
- Digital oscilcospe



Specifications

Functions

System setting	Setting communication parameters
Data input	- Editing of all parameters - Load, save, delete parameter files, etc.
Test options/Online operation	- Transfer and comparison of parameter data - Variables Monitoring - On-line recording for axis speed(torque)
Tools	- Digital Oscilloscope, jog mode monitor

Operating Enviroment

Operating systems	Windows 95/98/NT/ME/2000	
Processor	Pentium class at 200 Mhz or higher	
Memory requirements	Hard disk	100 MB free memory space
	RAM	64 MB min.
Screen	800x600 resolution, 256 colors recomended	
Peripheral connections	CD-ROM Drive RS232 or RS-422 serial port	

Compatible Units

	Specification
Motion Controllers	Sigma-II Series, SmartStep, Sigma-I Series, JUSP-NS600

Software

Software

Description	Model
SigmaWin+	MOTION TOOLS CD

Cables

Description	Model
Computer Connecting cable	R88A-CCW002P2 or JZSP-CMS02

Software

ALL DIMENSIONS SHOWN ARE IN MILLIMETERS.

To convert millimeters into inches, multiply by 0.03937. To convert grams into ounces, multiply by 0.03527.