

WS02-MCTC1-EV

CX-Motion

Creates programs to control the motion controller and monitors controller status

Provides the ideal environment for motion control support, from motion controller program development to full system operation.

Key Features

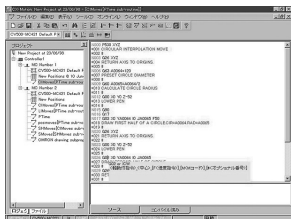
The CX-Motion software can be used to create, edit, and print the various parameters, position data, and motion control programs (G code) required to operate Motion Controllers, transfer the data to the Motion Control Units, and monitor operation of the Motion Control Units. Increase productivity in every step of the motion control process, from development of the motion control program to system operation.

Motion Control Programs

Easily create motion control G Code programs and parameters.

CX-Motion can create all of the data needed in the Motion Control Unit, such as parameters, position data, and the program. The program can be input in either G code or mnemonics.

- When the Unit is connected online, data can be transferred, verified, and saved.
- Data for different Units can be registered and managed as separate projects.



Operation Monitor

Powerful support during startup and operation

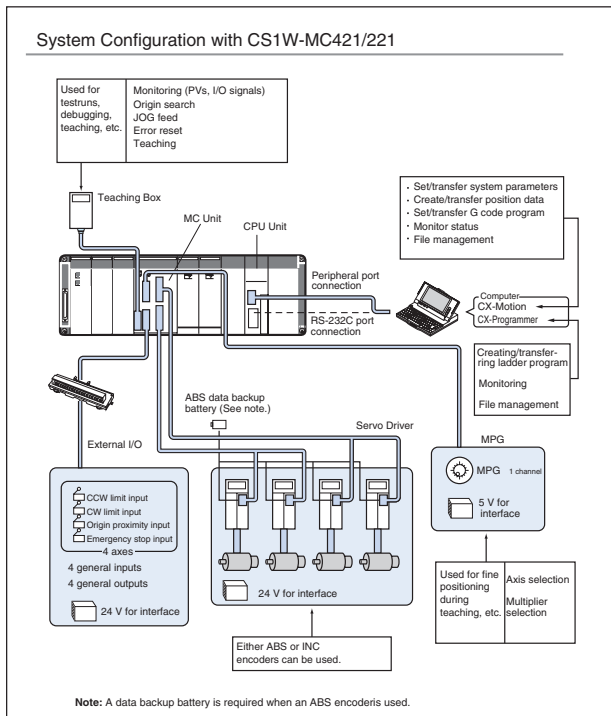
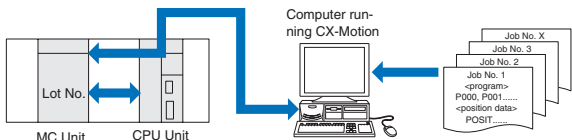
The MC Unit Monitoring function can display vital information at the computer, such as the present position, task being executed, I/O status, error displays, and servo system trace data.

- Up to 20 errors that have occurred in the Motion Control Unit can be stored and displayed (CS1W-MC421/221 and CV500-MC421/221 Motion Control Units only).

Automatic Loading Function

Ideal for flexible, small-lot production lines

Various programs and position data can be stored on disks for the computer running the CX-motion software and the required program/position data can be substituted into the Motion Control Unit when necessary. More than 100 different application programs can be used in this way. A wide variety of programs can be available for execution if the computer is used to store data for the MC Unit.



Software

Specifications

Basic Functions	Create/transfer/print various parameters, position data, and the MC program, transfer data to the MC Unit, and monitor MC Unit's operating status.
Other Functions	Automatic loading, Servo data tracing
Created files	CX-Motion project files (*.mci) Contents: System parameters, position data, program, scripts, etc.

Operating Environment

CPU:	Pentium 100 MHz or faster CPU
OS:	Windows 95, 98, NT4.0, W2000 or XP.

Compatible PLCs:

CS Series, C200HX/HG/HE Series, and CVM1/CV Series

ALL DIMENSIONS SHOWN ARE IN MILLIMETERS.

To convert millimeters into inches, multiply by 0.03937. To convert grams into ounces, multiply by 0.03527.